



Kitchens



Public
Toilets



Schools



Hospital
/ Clinics



Nursery
Centre



Mosques

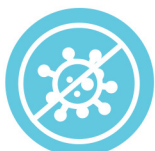


APPLICATION**
FOOT OPERATED SINK
(500 x 450 x 850mm)



CHEMICAL-FREE DISINFECTION AUTOMATIC WATER SANITATION SYSTEM (WSS)

Water and waterline disinfection . Protects against waterline biofilm growth



Kills up to
99.99% of bacteria
and viruses

3000x
faster

Effective
sanitation
(vs chlorine)

50x
stronger

Oxidation
performance
(vs chlorine)



Protects
against
pathogens



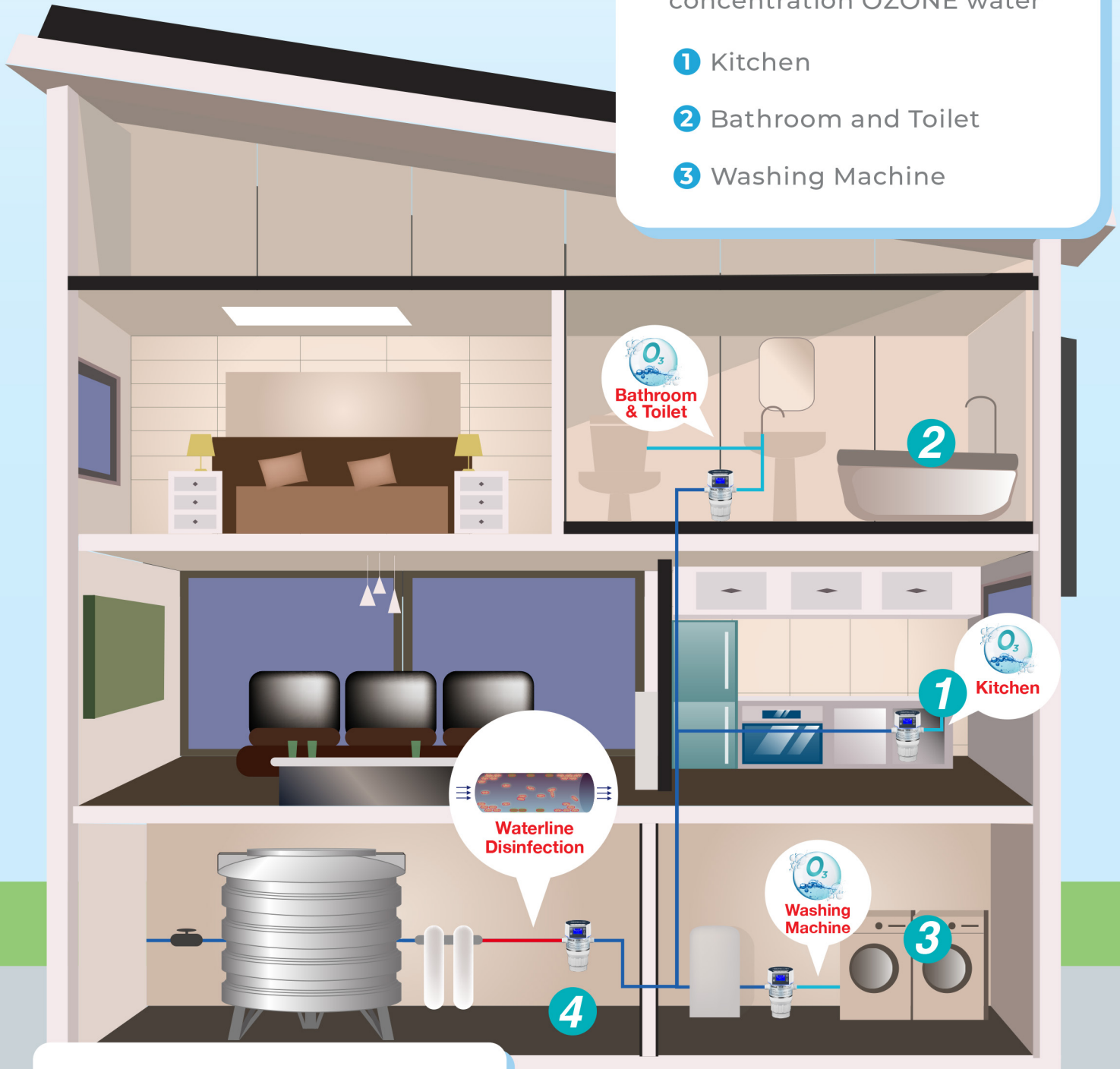
Reduces
costs and
labour hours

Applications of Automatic Water Sanitation System (WSS)

Terminal Applications:

Direct application of high concentration OZONE water

- 1 Kitchen
- 2 Bathroom and Toilet
- 3 Washing Machine

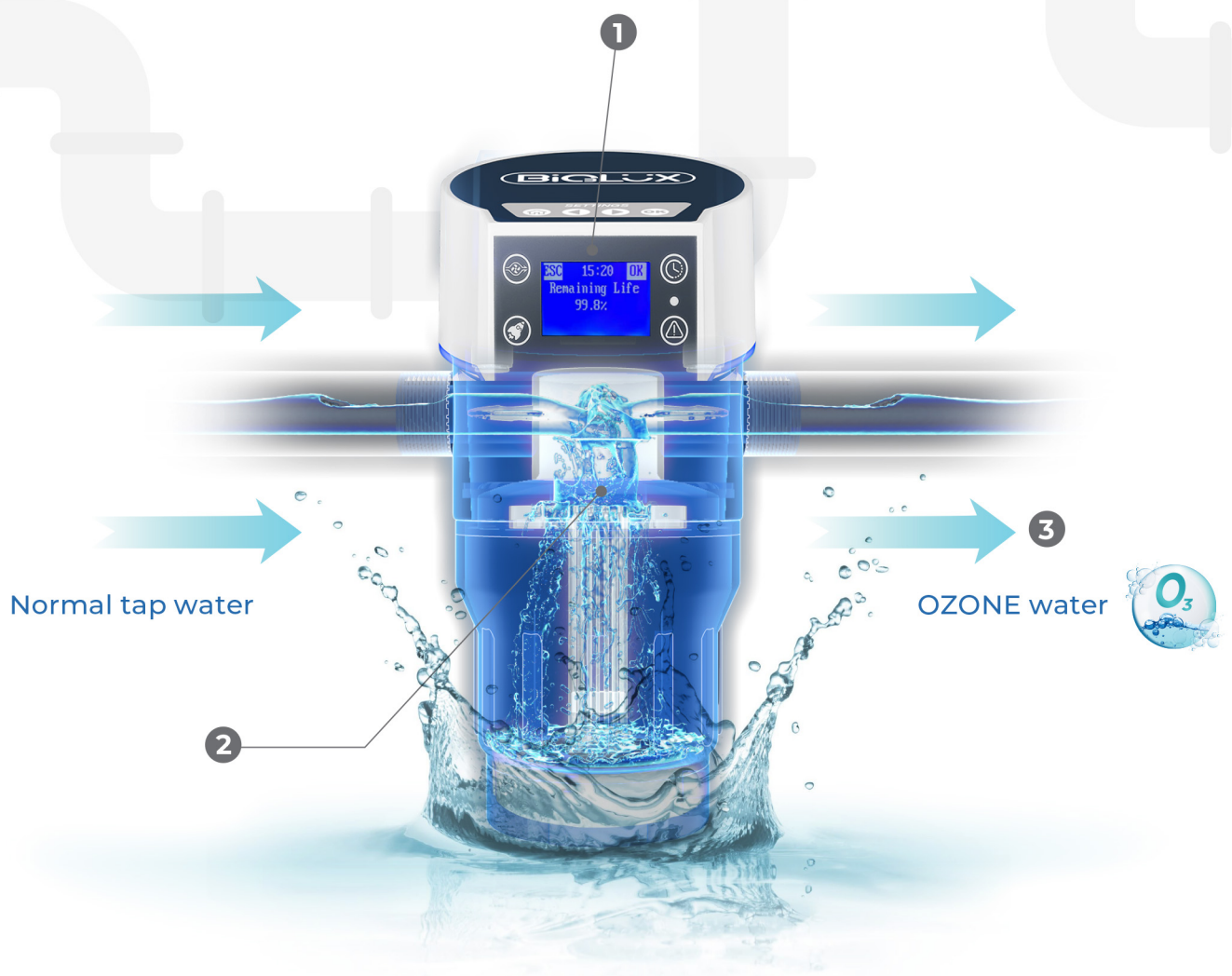


Whole-house Application:

Prevent growth of biofilms

- 4 Waterline Disinfection

How Does Automatic Water Sanitation System (WSS) Work?



1. Endless supply of chemical-free disinfectant

No waiting time. Convert tap water into OZONE water instantly.

2. Advanced Oxidation Process Technology (AOP)

Only need water and electricity.

3. Fully Dissolved OZONE Water (up to 1.5 ppm)

Kills up to 99.99% of the bacteria & viruses instantly without chemical residue.

AUTOMATIC WATER SANITATION SYSTEM (WSS)



Automatic Water Sanitation System (WSS) applies a revolutionary AOP (Advanced Oxidation Process) technology that can convert your regular tap water into OZONE Water.

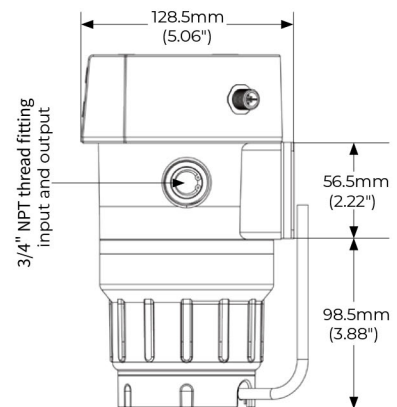
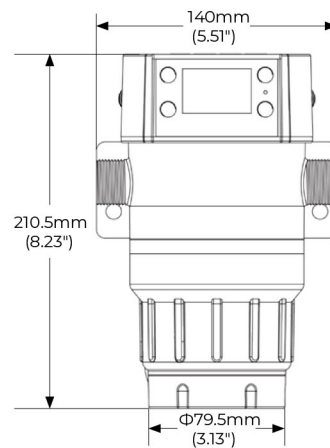
FEATURES :

- Easy integration into existing water supply.
- Turning tap water into powerful natural disinfectant.
- An endless supply of hygienic sanitization.
- Chemical-free.
- Notification for service.
- SAFE. After interacts with bacteria/virus, it converted to Oxygen Gas (O₂).



SPECIFICATIONS :

Model	EOS7177-Q
Application	Tap water point-of-use integration Residential (kitchen, washroom, washing machine)
Connection	3/4"
Flow Rate (at 7 kg/cm ²)*	3000 LPH @ 7 bar
OZONE Concentration	Up to 1.5ppm** / 0.02ppm**
Max. Pressure	7kg/cm ² (100psi)
Power Supply	AC 100-240V, 50/60Hz
Power Consumption	96W
Water Source	Clean Tap Water***
Dimensions (WxDxH)	140 x 128.5 x 210.5 (mm)
Weight (Net)	1.2 kg
Protection Class	IP56



Cartridge Life

- Approx. 1000 hr, depending upon water quality and operation mode.
- Indicator lamp shows status, telling when it is due for replacement.

Warranty

- Limited warranty against defects in materials and workmanship for 1 year.
- 1 year parts-only on cartridge.
- Normal usage exclusions apply, detailed in Operation Manual.

Note: WSS does not replace water filtration.

For best results, always connect WSS in the water supply behind the filtration system.

****Foot operated sink and WSS are sold separately.**

**** SGS & ATS report tested and proven**

Product image is for reference only. All information in this brochure is subjected to change without prior notice. All logos and trademarks shown here are the property of their representative owners. © 2020 Biolux Network (Asia) Sdn. Bhd. All Rights Reserved.



BiOLUX Asia



biolux.asia



BiOLUX Asia



BiOLUX Asia



www.biolux.asia

